



Asago City

Tourist Guide (English)



Table of content

Asago Map	3-4
Sightseeing Spots	5-22
Food & Drinks	23-30
Accommodation	31-32
Access	33-34



For more information, visit our online guide at <https://visitasago.jp>

Follow us on social media (Facebook and Instagram) [@visit_asago](#)

Share your Asago adventures with the hashtag [#visit_asago](#)
– we love to hear from you!

Free gift! – Show this guidebook at one of three tourist information centers around the county (Tenku-no-Shiro Information Center, Yamajiro-no-Sato Information Center, Ikuno Station Tourist Information Center) to get a little souvenir to memorize your trip to Asago!

ASAGO, THE COUNTY WHERE THE MORNING COMES

Located in the middle of Hyogo, Asago offers you a relaxed and take-it-easy holiday in “off the beaten track” of Japan. Nestled between the mountains, Asago boasts of a lush nature that will capture your heart all year around.

Historically it is divided into 4 main areas – Wadayama, Santo, Asago, and Ikuno – you can feel, touch and experience the rich history of the county: from the ancient times to the modern times. There are ancient tumuli all over the region. One of the tumuli named “Chasuriyama” is the largest Enpun tumuli in Kinki. At Asago Archeological Centre (located nearby the tumuli) you will meet those artifacts unearthed. If you would like to breathe the air of the samurai period, do visit famous Takeda Castle Ruins. Visiting southern part of the county, you will learn how Japan became the modern industrialized nation.

Take a walk through time and recharge your energy as you visit Asago and discover authentic Japan with us.



Asago Map

TAKEDA CASTLE RUINS,

THE CASTLE IN THE SKY

It will take your breath away...

Have you imaged that you are floating in the sky and walking in the cloud?

Yes, you can do that if you climb up to Takeda Castle Ruins in the right time in the right season (and you have to be lucky too)!

Known as “The castle floating in the sky” or “Machu Picchu of Japan”, Takeda Castle Ruins fascinates you with its appearance.

In autumn (particularly from the mid-September to the end of November), the sea of clouds – “Unkai” – cover the area and the castle in the sky appears in front of our eyes.



TAKEDA CASTLE RUINS

Asago, Wadayama,
Takeda 169

500yen (18 years old
and older)

Closed from Jan.4th to
Feb.28th

Hours change
seasonally, please visit
visitasago.jp
for more information

Recognized as a national heritage site in 1943, Takeda Castle Ruins is the pride and joy of Asago, and attracts hundreds of thousands of tourists every year to the mystical view it offers. **It was firstly built in the 15th century, then extended and reinforced during the Warring States period - "Sengoku-jidai" - (the 16th century);** however, it was abandoned in 1600 – shortly after the battle of Sekigahara . Now only its stone foundations remain, so that you might wonder how the castle would look like back in the days.

From the castle site, you will get a **panoramic view of Old Takeda Town** nestled between the mountains. For the most courageous, you can climb up to the historical ruins using one of the 2 mountain trails starting in downtown Takeda.

You can also take a bus or drive up to Yamajiro-no-Sato information center and make your way up on the paved road. And if you stop at Yamajiro-no-Sato, why not **try on a samurai armor** and take a souvenir photo of yourself in it? It's completely free of charge and just ask a staff there.

Download the access map to Takeda Castle Ruins →



THE SEA OF CLOUDS AND RITSUUNKYO

Hyogo, Asago,
Wadayama, Takeda

300yen
(16years old and older)

Open all year round

When it comes to Takeda Castle Ruins, a view you do not want to miss is the sea of clouds surrounding the site, giving the illusion that the castle is floating in the sky. But this phenomenon does not appear all year round, only in the autumn, from September to late November.

Prime conditions for the sea of clouds to appear include a **10 degree Celsius or more difference between the lowest and highest temperature of the day, high humidity and little to no wind.** To make the most of the view, you have to wake up early and equip yourself with a flashlight to climb up the mountain opposite Takeda Castle Ruins, quite rightly called **"Ritsuunkyō"** (*the gorge where the clouds rise.*)

But trust us when we say it is worth it: as the sun slowly rises from behind the mountains, the color of the sky goes through all shades of blue, occasionally accompanied by orange and pink. Time has passed, the sea of clouds progressively soar into the sky, revealing Old Takeda Town and the valleys underneath.



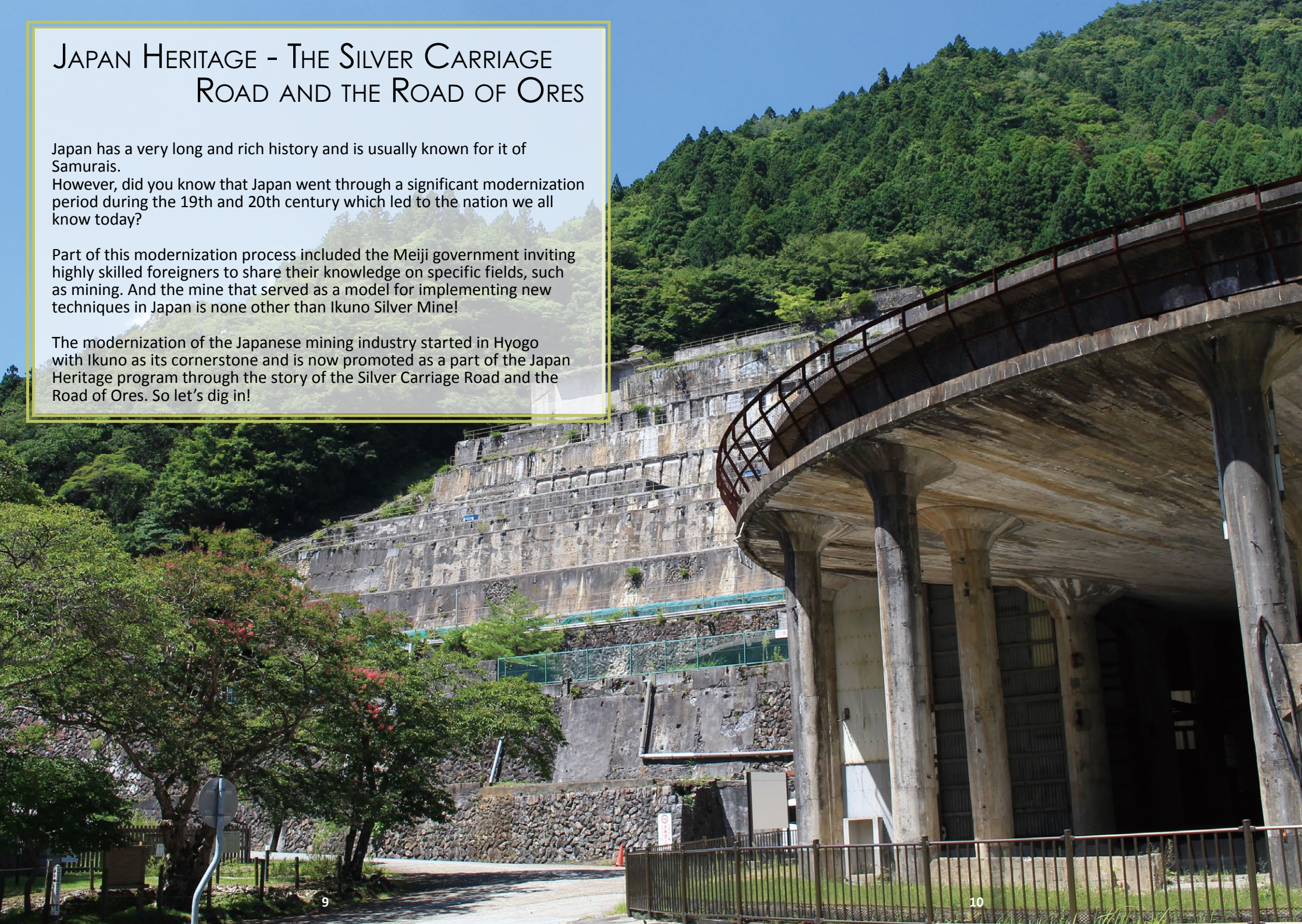
JAPAN HERITAGE - THE SILVER CARRIAGE ROAD AND THE ROAD OF ORES

Japan has a very long and rich history and is usually known for it of Samurais.

However, did you know that Japan went through a significant modernization period during the 19th and 20th century which led to the nation we all know today?

Part of this modernization process included the Meiji government inviting highly skilled foreigners to share their knowledge on specific fields, such as mining. And the mine that served as a model for implementing new techniques in Japan is none other than Ikuno Silver Mine!

The modernization of the Japanese mining industry started in Hyogo with Ikuno as its cornerstone and is now promoted as a part of the Japan Heritage program through the story of the Silver Carriage Road and the Road of Ores. So let's dig in!



IKUNO SILVER MINE

Ikuno Silver Mine was discovered in 802, boasting **1,200 years history**. The mine stayed open until **1973**, reaching as deep as **880 meters** with more than **350 kilometers** of tunnels.

In presence, you can explore the Kanagase Tunnel, a kilometer-long route set up for tourism where mannequins showcase techniques and hardships of mining. Don't forget to **stop at the archive room** which contains **miniature models of the mine and how it was exploited before modernization**.

For a cute souvenir, head to the Mine's souvenir shop, or if you like crafting things, head over to the workshop "Marie" right next door where **you can make your own silver clay key chain and accessory**.

Asago, Ikuno, Kono 33-5

900yen (18years old and older)

Closed on Tuesdays
between December and February

Apr. - Oct. 9:10 am - 5:20 pm (last entrance 4:40 pm)

Hours change seasonally, please visit visitasago.jp for more information

For more information about workshop prices and availability →



MIKOBATA ORE PROCESSING SITE RUINS

Mikobata district used to be another large mining site in Asago, attracting about one thousand workers and their families back in the day. You can now visit the ruins of this ore processing site and enjoy its unique atmosphere.

Asago, Sano 1842-1

Information center "Shinsen":
10 am - 5 pm
Closed on Wednesdays

OLD MOUCHET HOUSE

One thing you'll notice right away in Mikobata ore processing site ruins is this western style wooden house: it used to be the residence of French engineer Emile Mouchet, and was actually moved from Ikuno to Mikobata in 1887.

Asago, Sano 1842-1

10 am - 5 pm
Closed on Wednesdays



MIKOBATA CAST IRON BRIDGE

Another attraction in Mikobata Valley is its cast iron bridge built in 1883. It was built as a part of the Silver Carriage Road leading to Himeji port where refined ore was transported and traded.

Asago, Sano
(On route 429 on the way to Mikobata Ore Processing Site)



Touching history

ASAGO ARCHEOLOGICAL CENTER

Discover the ancient history of Asago through the tomb of the lord of Tajima and the related artifacts found in the Chasuriyama Enpun Tumuli. Climbing the tumuli itself will give a gorgeous view of the area. You can also make some “Jomon” pottery to bring back home!

Asago, Santo, Ootsuki 91-2

Free entrance
9 am – 5 pm (last entrance at 4:30 pm)

Closed on Mondays and the day following a national holiday



AWAGA SHRINE

Awaga Shrine is said to be more than 2,000 years old. Walk within its precincts and enjoy the nature around you as you take in the mystical atmosphere of this place. We recommend this spot to witness the change of seasons in peace and serenity.

Asago, Santo, Awaga 2152

Free entrance

Art in all its form

SAKE BREWERIES

Japan is famous for its sake, but do you actually know how it is made? Just contact them to schedule a visit and our local breweries will take you on a tour of their circa 300-year-old properties, showing you the ropes to making this ancestral Japanese beverage (tasting included).

Reservation required



[Tajime Sake Brewery](#)

Asago, Santo, Yanasemachi 545

8 am – 4 pm

<http://www.chikusen-1702.com/>

[Konotomo Sake Brewery](#)

Asago, Santo, Yanasemachi 508

9 am – 4 pm

<http://konotomo.jp>



ASAGO ART VILLAGE

Take a stroll in the valley of Tataragi and enjoy the outdoor art on your way to the museum: you can touch and climb some of them, so get creative and snap some great shots. In the museum itself, you will learn about the life and work of Toshio Yodoi, a Japanese sculptor from Asago.

Asago, Tataragi 739-3

Asago Art Museum 9 am – 5 pm (last entrance 4:30 pm)
Jun. – Aug. 9 am – 6 pm (last entrance 5:30 pm)

Closed on Wednesdays and the day following a national holiday

500yen (adults)



Strolling through time

Asago is a county with a long history, and you can feel it just by walking its streets.

In **Santo area** (first picture from the left), **go back in time to 20th century Japan**; admire its **old store fronts, paper ads and mailbox** as you make your way from the Santo Branch of Asago City Hall to the local sake breweries.

After enjoying the view from Takeda Castle Ruins, take the time to explore the old town. Turns and made out of narrow streets, **Old Takeda Town** is a far cry from modern Japanese cities. We especially recommend you walking down **Takeda Temple Street** (*Takeda Tera-machi Doori*, second picture): located behind JR Takeda station and at the foot of the mountain.

This street is lined up with **charming traditional Japanese houses** as well as several temples and shrines revering the former lords of Takeda Castle.

During your visit to **Ikuno** (third picture), make sure you stroll the downtown neighborhood of **Kuchiganaya** where you can **witness the remnants of its past as a mining town**.

You can **visit several former residences for mining intendants**, where Japanese and Western architecture meet gracefully, **as well as the former company houses** for miners and their families. If you look closely, you may spot some blackish looking stones: these are called **"karami-ishi"** which **made out of the waste produced from the mine** repurposed to be used as construction material back in the day.

KUROKAWA VALLEY

Nestled up the mountains of Ikuno in the Southern part of the county, Kurokawa Valley is locally known for its clear streams. Thanks to this, it is the natural habitat of the Japanese giant Salamander – “Oosanshōuo” or, as locals affectionately call it, “Ankō”. This lovely creature is classified as near threatened by the IUCN, so make sure not to disturb it if you encounter one – but feel free to buy several souvenirs in the shape of the salamander in Ikuno!

You'll pass Lake Ginzan, which offers beautiful views all year round. When you head in direction of Kurokawa valley, we recommend you to take a little detour to check out Uogataki Waterfall. This waterfall entails a natural water slide, and is surrounded by camping sites which are ideal for spending hot summer days with your family and friends. All the way up to Kurokawa Valley you'll also find Kurokawa hot spring as well as Marutsune guesthouse.



Credits: Ichidou



ITOI VALLEY

Located in the Northern part of Asago, in Wadayama area, Itoi valley will take you into a mystical world. The valley is full of typical Japanese landscapes that may look familiar to you if you have seen the cartoon movie “My neighbor Totoro” from Studio Ghibli.

As you quietly make your way up the paved road, the nature surrounds you: the rapids, the different shades of the leaves in the autumn or the different flowers and shades of green in the spring.

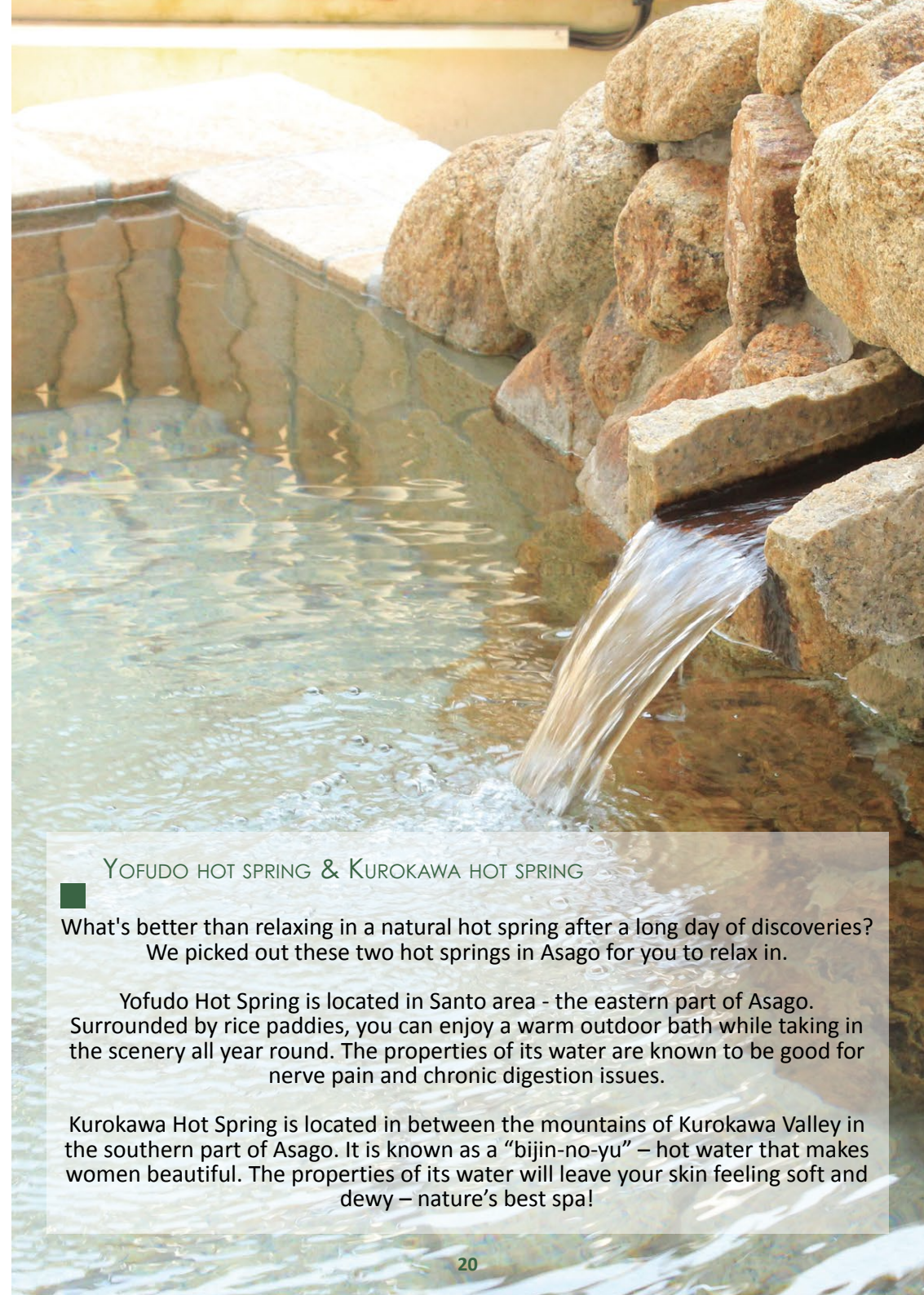
The symbol of Itoi valley is the giant Katsura tree, a tree estimated to be more than 2,000 years old! To reach it, you will need to enter the cedar forest and walk in its stillness for a while, before a clearing opens before you, revealing this immense tree and its numerous tree trunks entwined together.

TATARAGI VALLEY

After strolling amongst the sculptures of the art village, make your way up to the Tataragi Dam overlooking the valley and take in the fields, art pieces and Japanese houses on one side, and the dam lake stretching between the mountains on the other.

Notice how the road going up to the dam keeps going? If you follow that road, after a couple turns you will find yourself on the other side of the dam, in a little haven of peace called “Tataragi Eco Park”. Walk amongst its dawn redwood forest – rare metasequoia – and take in the fresh smells and the soft sounds of nature.

This hidden gem is the perfect place to recharge your batteries after the hustle and bustle of sightseeing in the cities.



YOFUDO HOT SPRING & KUROKAWA HOT SPRING

What's better than relaxing in a natural hot spring after a long day of discoveries? We picked out these two hot springs in Asago for you to relax in.

Yofudo Hot Spring is located in Santo area - the eastern part of Asago. Surrounded by rice paddies, you can enjoy a warm outdoor bath while taking in the scenery all year round. The properties of its water are known to be good for nerve pain and chronic digestion issues.

Kurokawa Hot Spring is located in between the mountains of Kurokawa Valley in the southern part of Asago. It is known as a “bijin-no-yu” – hot water that makes women beautiful. The properties of its water will leave your skin feeling soft and dewy – nature’s best spa!

ASAGO ALL YEAR AROUND

March
-
April

CHERRY BLOSSOM VIEWING

Enjoy the quietness of Asago for cherry blossom viewing!

The county has several great spots to capture this ephemeral phenomenon, whether you come during full bloom or as the petals start falling, the landscape is covered in pink.



Visiting the middle of Asago (first picture), watch the millennial house and the lake nearby get covered in pink petals.

Also, take a stroll down Maruyamagawa River or Ichikawa River where the cherry blossom trees line the banks.

If you are more of a night owl, enjoy the fresh night air on Takeda Temple Street and be mesmerized by the shadows and lights reflecting on the emblematic Japanese tree.



May

YAKUNO HIGHLANDS



Asago, Wadayama, Miya 1033

10 am-3 pm
Free Admission
Spring and Autumn

Nestled between Hyogo and Kyoto, Yakuno Highlands is a little haven of peace where you can enjoy seasonal flowers.

SHIRAI OOMACHI

WISTERIA PARK

Asago, Wadayama, Shirai 1008

9 am – 6 pm
500yen (12years old and older)
Spring

Enjoy a walk under a bed of flowers: wisteria blooms around the end of April to the middle of May each year in Asago, surrounding visitors with a wonderful smell.



FIREWORKS/SUMMER FESTIVALS

Japan is known for its fireworks, and Asago is no exception! Every year, each part of the county holds its summer festival with their typical food stalls and emblematic fireworks.

Wadayama Jizo Summer Festival Aug. 22nd & 23rd
Asago Summer Festival Aug.16th
Santo Summer Festival Aug.19th



AUTUMN FESTIVALS



Less known but equally fascinating to experience, autumn festivals take place each year in the early October, the day preceding Sports Day.

Witness different neighborhoods of Asago parading their shrines weighting over a ton around town and watch them lift it above their heads.

This very surprising custom has been kept around for centuries and is used to give thanks for good crops for the year.

September

October

ASAGOURMET

With 84% of the area covered in mountains and forest, Asago has a lot of nature to offer, especially when it comes to food. Try out fresh and tasty vegetables, the sweet and flavorful “Iwatsu leek”, experience “Tajima beef” from locally raised cattle producing a tender and juicy wagyu meat, indulge in delightful locally brewed sakes – “Chikusen” and “Konotomo” – born from the marriage of fresh water and local rice...

Asago has much to offer, be it through its restaurants and cafes menus, or its roadside station where you can buy all our specialties to bring back home.

TAJIMA NO MAHOROBA

Located next to the Asago Archeological Center, this roadside station is the perfect place to buy fresh Asago produce. It also includes a food court and the souvenir shop.

Accessible from the North Kinki Toyooka highways and national road (136).

Asago, Santo,
Ootsuki 92-6



ASAGO MURA OKOSHI CENTER

Located in Asago area not far from the Art Village, this roadside station is the perfect place to get Iwatsu leek if you are visiting during winter, as well as for buying some souvenirs. The restaurant serves game meat dishes during hunting season.

Accessible from national road (312).

Asago, Tataragi 213-1



FRESH ASAGO

Also located in Asago area, this roadside station is the perfect stop to get a last taste of Asago on your way out. Besides the souvenir shop, you can also enjoy a variety of Japanese dishes including unique ingredients such as venison, wild boar, Tajima beef or Iwatsu leek.

Accessible from the Bantan highway and national road (312).

Asago, Iwatsu 96
(inside Asago PA)



Get a taste of Asago



GRAND CHEF

Ever wanted to try wagyu beef? Go here to see the chef cook it before your very eyes and enjoy the juiciness and tenderness that Tajima beef is known for.

Asago, Wadayama, Hirataoka 330-3

Lunch 11:30 am – 2 pm
Dinner 5:30pm – 9 pm (reservation recommended)
Open all year round

@grandchef_hosomi



HAMBURGER MOMIJI

Want to try Tajima beef in an all-time favorite? At this hamburger shop, you can enjoy this deliciously juicy meat in a hamburger, crafted into a homemade patty...or as a steak!

Asago, Wadayama, Handa 27-2

11 am – 7 pm (last order 6:30 pm)
Closed on Mondays

@momiji_53



CAFE ARGENT

A quaint little café where you can enjoy “Ikuno’s specialty Hayashi Rice”, a meal that used to be greatly popular amongst miners and their families. Homemade desserts are also available.

Asago, Ikuno, Kuchiganaya 521-2

9 am- 4 pm
Closed on Mondays and
On every 1st and 3rd Tuesdays of the month.

@cafeargent



OAKYARD

Come and enjoy the freshness of locally grown vegetables arranged together in a Japanese style set or pasta set, or simply stop to enjoy some coffee and cake.

Asago, Sano 998

11 am – 5:30 pm (lunch 11:30 am - 2:30 pm),
closed on Thursdays

oakyard_junazm



NOOK AND COFFEE

Take a seat and get comfortable at Nook and Coffee and enjoy their delicious sandwich and cakes. And try out their thickly cut fried potatoes, you won't regret it.

Asago, Wadayama, Hirano 160-1

9:30 am – 2:30 pm
Closed on Sundays and holiday

@nook.and.coffee.asago



BOESCH

Located inside a traditional house with a charming little garden, this café offers you a rich taste of locally grown produce arranged in a Western-Japanese fusion style. Seasonal menu.

Asago, Ikuno, Kuchiganaya 600

11 am – 5 pm (lunch 11:30am – 2 pm)
closed on Tuesdays and every 3rd Monday of the month

@boesch2015

Japanese Food



UEMONGORO

Try out homemade Japanese buckwheat noodle (soba) while enjoying a view of Takeda Castle Ruins. During winter, you can enjoy Iwatsu leek as a topping or in a Japanese hot-pot.

Asago, Wadayama, Hirataoka 330-3

Lunch 11 am – 3 pm (last order 2:30pm)
Dinner 6 pm – 11pm (reservations only, last order 10:30pm)
Closed on Mondays and every 3rd Tuesday of the month

uemongoro.com



HOMEMADE UDON ISSHIN

Isshin offers you authentic handmade Udon noodles in a variety of flavors. All of them are yum and DO try its signature dish "Curry Curry" Udon noodle. The master's original curry spices are infused in handmade noodles and it is served in the special curry soup.

Asago, Wadayama, Takeda 1523-1

11 am – 3 pm (during the week)
11 am – 7 pm (weekends and holidays)



OLD ROOKIE

Just want to enjoy some "Yakitori" (chicken skewers)? Head over to Old Rookie. Their potato salad is amazing too.

Asago, Wadayama, Takeda 2486-30

Asago, Wadayama, Takeda 2486-30
5 pm – 11 pm
Closed on Wednesdays

[@oldrookie2017](https://www.instagram.com/oldrookie2017)



TERA CAFÉ IKKYU

Hidden in one of Asago's mountains, this café is located inside a temple and serves individual Japanese meals "Gozen" made from fresh produce, meat and fish.

Asago, Toji 981

Asago, Toji 981
10 am – 2 pm
Closed on Tuesdays



KIKORI

Discover the Japanese set meals "teishoku", accompanied by rice cooked in a pot with a small flame "kamameshi", in this traditional style house. The menu changes seasonally depending on the availability of ingredients.

Asago, Santo, Kitagaki 294

Lunch 11:30 am – 2 pm
Dinner reservations only until 9 pm
Closed on Tuesdays



SUSHI NO EIRAKU

What more is there to say about Japanese sushi? If you are craving some raw fish, Eiraku will provide you with high quality and tasty sushis.

Asago, Wadayama, Takeda 2028

5 pm - midnight (during the week)
5 pm – 11pm (weekends and holidays)
Closed on Tuesdays



Tea Time



International



MR MASA COFFEE

Fancy a little coffee after strolling down Santo area and discovering the secrets of Japanese sake brewing? Head over to Mr. Masa coffee – hot or cold, sweet or salty, for lunch or for a snack, they’ve got your back!

Asago, Santo, Yanasemachi 917-1

Asago, Santo, Yanasemachi 917-1
11:30am – 6 pm
Closed on Wednesdays

@coffeemasa

USAGIYA COFFEE SHOP

This coffee shop is waiting for you with plenty of sweets and coffee; find your spot to sit down, relax, and enjoy your tea time in its warm atmosphere. If you are around in the summer, don’t miss out on their shaved ice – they are absolutely dreamy!

Asago, Wadayama, Tamaki 833-2

10 am – 5 pm (last order 4:30),
Closed on Mondays and Tuesdays

@usagiya_coffeeshop



ICE CREAM FACTORY LILAC

For hot day, head over to Itoi and enjoy sweet and creamy homemade ice cream from Lilac; the view from the terrace will fill your heart with nature.

Asago, Wadayama, Shirai 486

10 am – 5 pm
Closed on Wednesdays

@lilac_ice1766

SUGATTI BAKESHOP

Set in a traditional Japanese house, this little bakery specializes in tarts and baked cheese cakes. You can opt for to go or eat in to enjoy them. Make sure to come early though, as they are really popular with the locals!

Asago, Santo, Otta 20

Asago, Santo, Otta 20
12pm – 4 pm
Closed on Mondays, Thursdays, Sundays and holidays

@sugatti_bakeshop



UMAI (CHINESE)

Asago, Iwatsu 343-1

Lunch 11 am – 2:30pm
Dinner 5 pm – 11 pm



FUKUNAE (TAIWANESE)

Asago, Wadayama, Takeda 203-2

10 am – 4 pm
Open all year
(Call ahead before coming)



SAKURA (INDIAN)

Asago, Wadayama, Kuwabara 210-1

Lunch 10am – 3 pm
Dinner 5 pm – 10 pm



COEUR A COEUR (FRENCH)

Asago, Wadayama, Tamaki 507-12

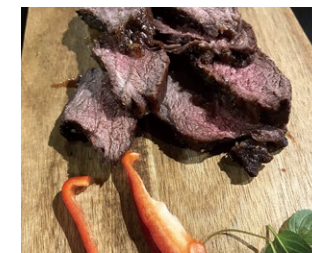
Lunch 11:30 am – 2 pm
(last order 1:30 pm)
Dinner 6 pm – 9 pm
(reservations only)
Closed on Mondays



GAI (WESTERN)

Asago, Wadayama, Takeda 264-1

Lunch 11 am – 2:30 pm
(last order 2:00 pm)
Dinner 5 pm – 10 pm
(last order 9:30pm)
Closed on Thursdays



LU EN HOTEL EN (FRENCH)

Asago, Wadayama, Takeda 160

Lunch 11:30 am – 3:00 pm
(last order 2:30pm)
Dinner 5:30pm – 10 pm
(last order 8:00pm)
Reservation Required

@takedacastle_en

When I travel, I like...

- ☑ TRADITIONAL PLACE
- ☑ BEING COMFORTABLE AND ENJOYING HIGH QUALITY SERVICE

Looking for an authentic Japanese atmosphere all the while enjoying all the perks of a hotel? Check out these 4 accommodation options located in traditional houses in downtown Takeda for a comfortable and classy stay.

- | | | | |
|--|--|---|--|
| HOTEL EN
Asago, Takeda 363
2 min by foot from JR Takeda Station | MACHIYA TERAKOYA
Asago, Takeda 250-1
2 min by foot from JR Takeda Station | HOTEL SHU SHU
Asago, Takeda 264-1
2 min by foot from JR Takeda Station | IKUNO STAY
Asago, Ikuno, Kuchiganaya 697
15 min by foot from JR Ikuno Station |
|--|--|---|--|



- ☑ TRADITIONAL LOOKING BUT STILL AFFORDABLE PLACES
- ☑ MEETING WITH THE LOCALS

Just looking for a comfortable place to sleep while you explore the city during the day?

Asago has a couple of guesthouses and Japanese inns (ryokan) for you to choose from!



GUESTHOUSE TENKU
Asago, Takeda 220
2 min by foot from JR Takeda Station



Taiwanese owner!

FUKUNAE HOUSE
Asago, Takeda 203-2
2 min by foot from JR Takeda Station

- ☑ UNUSUAL LOOKING PLACES (EG. TREE HOUSES)
- ☑ FAMILY-FRIENDLY PLACES

Travelling to Asago as a family and looking for a special place to stay? Check out these accommodation options: surrounded by nature, they offer you and your family a private space so you can enjoy your stay at your own pace.

- | | | |
|---|--|---|
| CoCoDe
Asago, Tataragi 727-2
2 min from Asago Art Village Museum | SUGOMORI
Asago, Ikuno, Tochiyara 1787-29
Near Ikuno Highlands | GUEST HOUSE MARUTSUNE
Asago, Ikuno, Kurokawa 322
Near Kurokawa Onsen |
|---|--|---|



- | | | |
|---|--|---|
| RESTHOUSE SAKAE
Asago, Wadayama, Handa 621-1
15 min by foot from JR Wadayama Station | YUHIKEN
Asago, Wadayama, Wadayama 31
7 min by foot from JR Wadayama Station | GUNKAKUTEI
Asago, Wadayama, Wadayama 283
10 min by foot from JR Wadayama Station |
|---|--|---|



Access

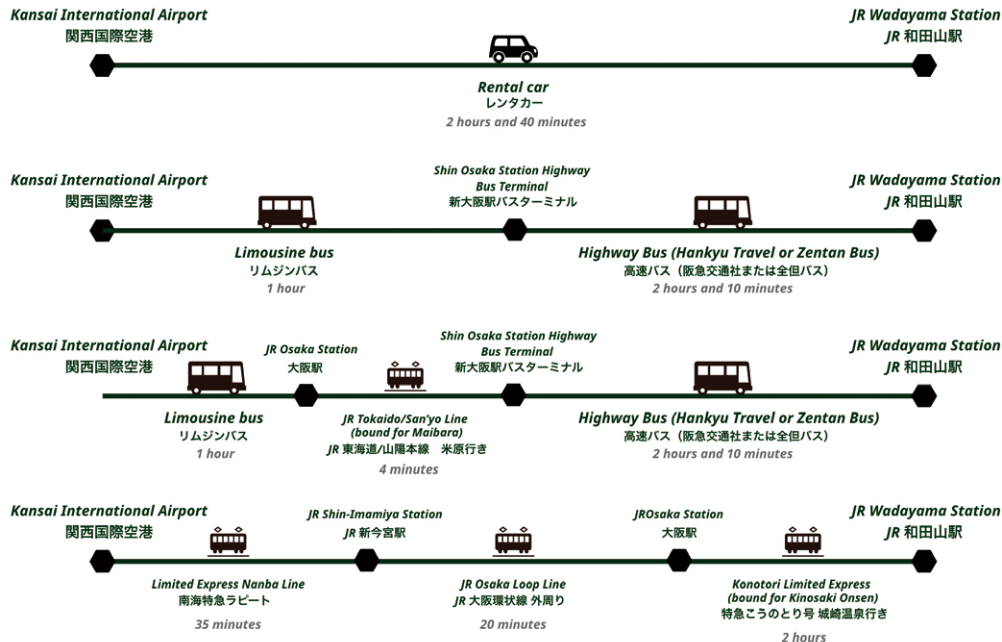


We strongly recommend you drive to Asago to best enjoy your stay.

Rent a car directly from Kansai International Airport or one of the big cities around the area (Kyoto, Osaka, Kobe, Himeji).

Should you choose not to drive, here are some options:

FROM KANSAI INTERNATIONAL AIRPORT



Getting around

PUBLIC TRANSPORTATION

Asago has 6 train stations, all managed by the Japan Railway Company (JR), and thus covered by the Japan Rail Pass: JR Wadayama Station, JR Takeda Station, JR Yanase Station, JR Aokura Station, JR Nii Station and JR Ikuno Station.

Two lines go through Asago: the Bantan Line from Himeji, and the Fukuchiyama Line from Fukuchiyama, with trains running once per hour. You can also hop on an express train from Himeji (3 trains a day), Kyoto (6 trains a day) or Osaka (9 trains a day) to reach Asago.

The local bus system is managed by the company Shinki Bus and the company Zentan Bus. Please consult their website for prices and hours (Japanese only):
<https://www.shinkibus.co.jp/>
<https://www.zentanbus.co.jp>

TAXIS

An easy and relaxed way to visit Asago is to use taxis. The city is covered by several companies. Please contact each company for quotes and availability.

Fuku Fuku Taxi	+81 79-670-1269	Asahi Taxi	+81 79-672-3221
Nii Taxi	+81 79-677-0143	Ikuno Tourism Taxi	+81 79-679-2301
Zentan Taxi (Wadayama Office)	+81 79-672-2807	Ikuno Taxi	+81 79-679-3156
Asago Taxi	+81 79-672-0404	Himehana Tourism (bus)	+81 79-670-0456

BICYCLE RENTAL



Are you more on the sporty side or do you just want to take your time to discover some of Asago's hidden gems?

RENT A BIKE – they offer you full support included in their rental prices with several courses that will take you to the main sightseeing spots... and more!

Head over to their website for detailed information:
www.asagocycling.com



Issued March 2022